



## DRIVEN DIESEL POST PUMP FUEL FILTER KIT



### INSTALLATION GUIDE

E-Mail: [sales@drivendiesel.com](mailto:sales@drivendiesel.com) Web: [www.drivendiesel.com](http://www.drivendiesel.com) Phone: 623-582-4404

**T**hank You for purchasing the Driven Diesel Post Pump Fuel Filter Kit! **Please read and familiarize yourself with this manual fully before proceeding with the installation of the kit.** Also, always work safely. Make sure that there is plenty of light and adequate ventilation, and allow yourself several hours to complete the installation. After reading these instructions, if you feel that the installation is beyond your capability, please have this kit installed by a qualified mechanic.

Finally, the installation of this kit requires exposing the fuel system. Diesel fuel is flammable, and its vapor is explosive; therefore common sense dictates that there be no smoking or open flame within 50 feet of the workspace. If any fuel spills, contain it and wipe it up immediately. Do not let the fuel stand on any painted surfaces of your vehicle, or damage to the finish may occur. We HIGHLY RECOMMEND having an appropriate fire extinguisher close by!

**Please don't hesitate to contact us should you have any questions.**

**Necessary Tools & Supplies:**

**Ratchet and Socket Set  
Standard Wrench Set  
Allen Wrench Set or Sockets**

Some of the installation steps for this product will depend on the configuration of the rest of your fuel system. This kit was designed primarily to work with our "Fuel Bowl Delete" and "High Performance Fuel Delivery" kits. The hose and fitting configuration of this kit will connect directly to either a stock fuel pump (with the optional adapter), our FuelLab fuel pump or any other large pump with a #10 o-ring outlet, mounted in the stock location. It will also connect directly to the inlet of our fuel bowl delete block. Use of this kit with other "Y" blocks or fuel pumps may require modification of our parts.

Also, this kit may not supply the parts necessary to make the connection from the return port of the fuel pressure regulator back to the return port on the fuel tank. This will depend on your pump configuration and whether you ordered any of the optional return parts. Keep in mind that larger fuel pumps generally like larger return lines, so using the tiny 5/16" stock return line on the frame with a big pump like the FuelLab or Aeromotive "might" result in high pressure readings.

Finally, because this kit is usually installed in conjunction with other fuel system components, and we don't know which components or kits you are working with, these instructions will not be "step-by-step". We will basically show you where each component gets installed, complete the installation in the order that makes the most sense while working with the rest of the components you're installing. **THIS INSTALLATION MANUAL ASSUMES THAT THE FACTORY FUEL FEED AND RETURN LINES THAT GO UP THE FRONT OF THE ENGINE BEHIND THE ALTERNATOR HAVE ALREADY BEEN DISCONNECTED AND/OR REMOVED SINCE THEY ARE NO LONGER NEEDED WITH THE REMOVAL OF THE FUEL FILTER BOWL.**

1. Locate the transmission bell housing inspection cover behind the oil filter. There are two bolts on the driver side facing the front of the truck (see image 1 for Automatic Trans, Manual Trans is similar). Remove these 2 bolts.
2. Pre-Assemble the filter head to the mounting bracket, using 3 flat washers and 3 nylok nuts. See image 2 for reference, Manual Trans trucks will NOT have the spacer and will re-use the factory bolts.
3. Install the pipe thread plugs and fittings using Teflon tape or other appropriate sealant on the threads. See image 3 for correct orientation. Tighten securely.
4. Install the bracket onto the front of the trans. Use the supplied allen bolts (auto trans) or factory bolts (manual trans). Tighten securely.

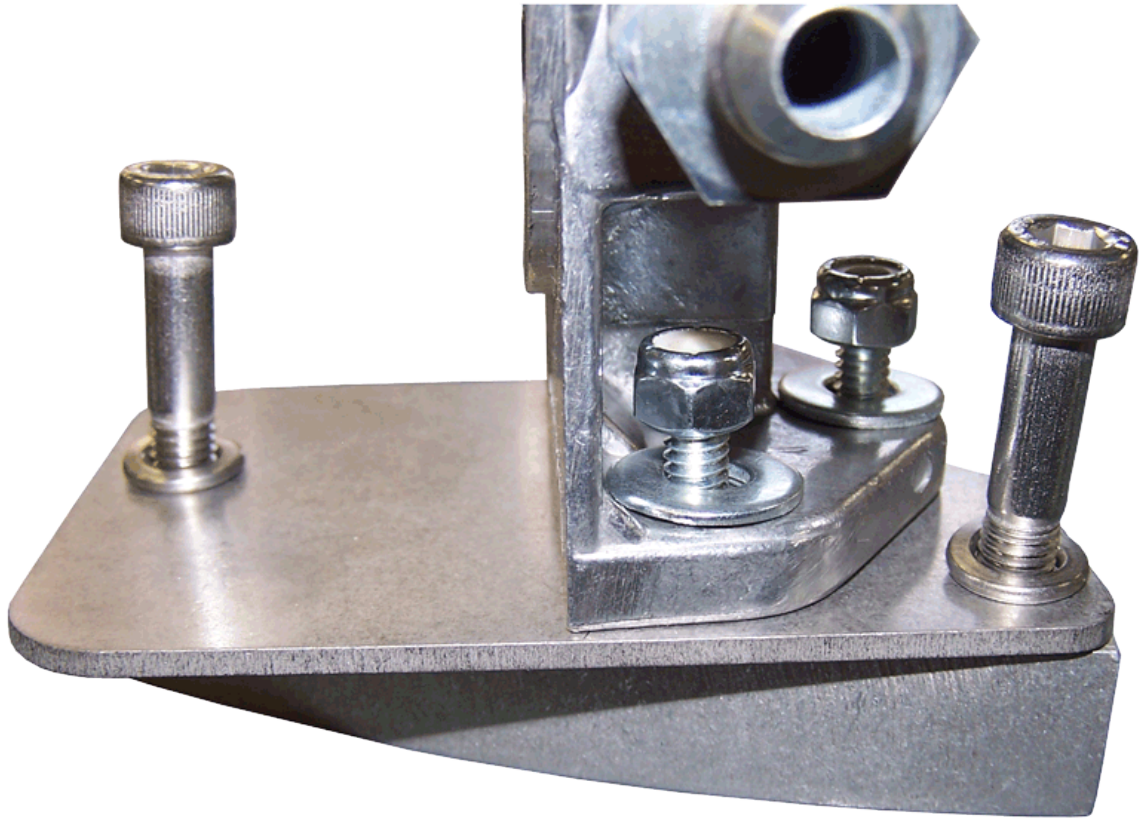
The next steps may vary depending on the fuel pump and fuel system being used. Our instructions are based on use with our kits and either the stock or FuelLab fuel pump in the stock location. Adjust as necessary...

5. Follow instruction "a" below for use with the stock fuel pump, or instruction "b" for use with a FueLab pump (or other with #10 o-ring outlet). ALL of the instructions below assume that the pump is mounted in the stock location.
  - a. Locate the aluminum adapter fitting (see image 4), this fitting is optional and required if using this kit with the stock fuel pump. Snap the adapter onto the outlet of the stock fuel pump until it locks in place. This will provide the correct #6 male outlet needed for a later step. See image 5.
  - b. Locate the #10 O-Ring to #6 Male JIC adapter fitting in the kit. Thread this fitting into the outlet of the FueLab or other pump and tighten until it bottoms out...do not overtighten.
6. Connect the SHORT hose (has 2 straight ends) to the fitting you just installed in the OUTLET of the stock pump. Connect the other end to the INLET of the filter head mounted on the trans. Look at Image 3 and notice that the INLET of the filter head is the port farthest FORWARD in the truck! Once both ends are loosely connected, tighten them completely. It's a good idea to put a backup wrench on the brass nut to keep the hose from twisting when tightening the main hose end nut. Refer to image 5 again if needed.
7. Connect the straight end of the LONG hose to the OUTLET of the filter head (rearmost fitting). Route the hose up the inner fender, behind the alternator and connect the 90° end to the inlet of the fuel bowl delete block. **MAKE SURE THE HOSE IS CLEAR OF ANY MOVING PARTS OR HOT EXHAUST!** Once both ends are connected, tighten them completely (using the backup wrench on the straight hose end and holding the 90° hose end by hand). We recommend using cable ties to secure the hose so it can't move and come in contact with steering or hot exhaust parts!
8. The hoses connected to the filter head should now look like those in image 6.

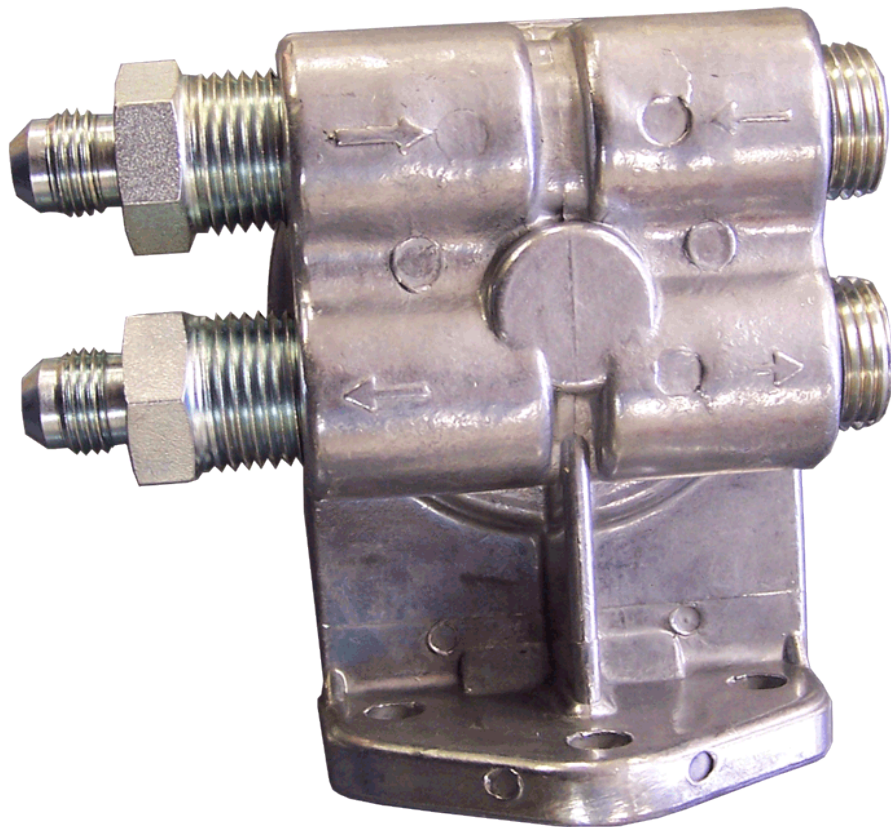
At this point you need to go over the entire installation, make sure that all nuts and bolts are tight. Make sure that all of the fittings and hoses are tight. If you are ready, pre-fill the filter with diesel fuel and install on the filter head. When the rest of your fuel system work is complete, cycle the key to pressurize the system and check for leaks. Resolve any leak issues BEFORE driving the vehicle.



**Image 1 – Automatic Trans Inspection Plate – Driver Side Bolts**



**Image 2 – Nut, Bolt & Spacer Configuration for Automatic Trans**



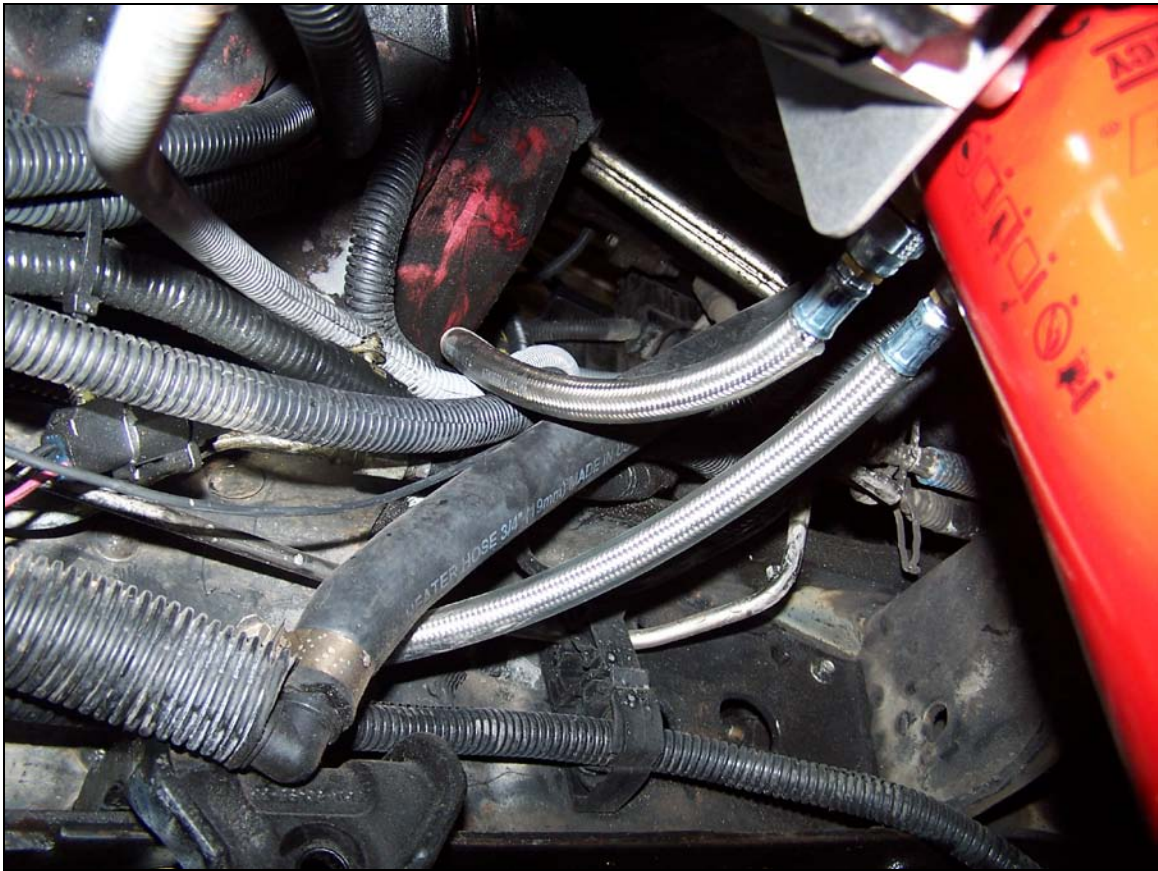
**Image 3 – Correct Plug and Fitting Orientation**



**Image 4 – Stock Fuel Pump Outlet Adapter Fitting**



**Image 5 – Outlet Adapter (blue in this photo)  
Installed and Hose Connected (stock fuel pump)**



**Image 6 – Hose Routing from Filter to Truck**

**S DIESEL, LLC (dba STRICTLY DIESEL AND/OR DRIVEN DIESEL\*) WARRANTY AND LIABILITY POLICY**

**MOST OF THE PRODUCTS SOLD BY S DIESEL, LLC, ARE DESIGNED TO INCREASE VEHICLE PERFORMANCE...USE AT YOUR OWN RISK!**

**Do not install or use any product(s) purchased from S DIESEL, LLC ("S DIESEL") until you have carefully read the following Warranty and Liability Policy (the "Warranty").**

**PRODUCT WARRANTY POLICY**

Subject to the limitations, exclusions, and qualifications set forth below, the product or the products made and sold by S DIESEL (the "S Diesel Product" or "S Diesel Products") are warranted to Buyer as set forth in this Warranty. The installation of the S Diesel Products indicates that Buyer has read, understands and agrees to the terms and conditions of this Warranty. Any warranty on products that are made by another manufacturer which are resold by S DIESEL to Buyer is made to Buyer by the manufacturer of such products in accordance with and subject to all conditions and limitations of the manufacturer's warranty in effect on the date of the purchase by Buyer. S DIESEL makes no warranties to Buyer, express or implied, with respect to such products that are made by another manufacturer.

**LIMITED WARRANTY**

The S Diesel Products (except S Diesel Products specified to have different warranty terms) are warranted to be free from defects in material and workmanship, under normal use and service for a period (the "Product Warranty Period") of ninety (90) days from date of delivery to Buyer, unless S DIESEL performs the work installing the S Diesel Products, in which case the Product Warranty Period shall be extended to equal the Service Warranty Period (as defined below under "SERVICE WARRANTY POLICY"). S DIESEL's liability under this Warranty is limited to repair or replacement at its option, subject to the provisions set forth herein, of any S Diesel Products which upon examination S DIESEL are found to be defective. Buyer shall prepay cost of transportation of defective S Diesel Products to S DIESEL for inspection.

S DIESEL shall not have any responsibility under this Warranty unless (1) the defect in an S Diesel Product results in a claim arising within the Product Warranty Period, measured from the date of delivery to Buyer, (2) the S Diesel Product, if installed by an installer other than S DIESEL, was properly installed, (3) the S Diesel Product was normally maintained and not subject to misuse, negligence or accident, and

(4) the S Diesel Product, system components and/or accessories were not repaired or altered in such a way that in the judgment of S DIESEL the S Diesel Product's performance or reliability was adversely affected.

#### EXCLUSIONS

Any of the above warranties by S DIESEL shall not apply if Buyer's vehicle is in an accident, misused, neglected, altered from the S Diesel Product's manufacturer original designs or specifications or serviced in connection with a warranty claim hereunder without prior written approval of S DIESEL.

#### REMEDIES EXCLUSIVE

Repair or replacement of defective S Diesel Products in accordance with the Limited Warranty above shall be Buyer's exclusive remedy for and shall constitute satisfaction of any and all liabilities of S DIESEL with respect to any defect in any S Diesel Product whether based in warranty, contract, tort, negligence, strict liability or otherwise.

#### DISCLAIMERS AND LIMITATIONS

**THE EXPRESS WARRANTIES SET FORTH ABOVE ARE EXCLUSIVE AND IN LIEU OF ALL OTHER WARRANTIES, CONDITIONS AND TERMS AS TO QUALITY OR FITNESS OF ALL PRODUCTS SUPPLIED BY S DIESEL TO BUYER, WHETHER WRITTEN, ORAL OR IMPLIED, STATUTORY OR OTHERWISE, INCLUDING WITHOUT LIMITATION, ANY WARRANTIES OR CONDITIONS OF MERCHANTABILITY OR FITNESS FOR A PARTICULAR PURPOSE, AND ALL SUCH OTHER WARRANTIES, CONDITIONS AND TERMS ARE HEREBY DISCLAIMED AND EXCLUDED BY S DIESEL. IN NO EVENT SHALL S DIESEL BE LIABLE FOR ANY LOSS OF ACTUAL OR ANTICIPATED PROFITS, LOSS OF ANTICIPATED BUSINESS, COST OF SUBSTITUTE PRODUCTS, LOSS OF USE OR DOWNTIME COSTS OR DELAY CLAIMS (WHETHER DIRECT OR INDIRECT) NOR FOR ANY OTHER SPECIAL, INDIRECT, INCIDENTAL OR CONSEQUENTIAL DAMAGES ARISING OUT OF OR RELATING TO THIS WARRANTY OR THE SUPPLY OF S DIESEL PRODUCTS TO BUYER, WHETHER BASED IN WARRANTY, CONTRACT, TORT, NEGLIGENCE, STRICT LIABILITY OR OTHERWISE. BUYER ACKNOWLEDGES THAT (A) THE PRODUCTS PURCHASED FROM S DIESEL WILL BE USED IN CONNECTION WITH ACTIVITIES, UNDER EXTREME CONDITIONS AND/OR SUBJECT TO MODIFICATIONS REQUESTED BY BUYER FOR WHICH THE PRODUCTS MAY OR MAY NOT BE SUITABLE; (B) THE WARRANTY OF SUCH PRODUCTS FOR PERFORMANCE IN CONNECTION WITH SUCH ACTIVITIES, UNDER SUCH EXTREME CONDITIONS AND/OR SUBJECT TO SUCH MODIFICATIONS REQUESTED BY BUYER IS NOT POSSIBLE; AND (C) ANY MANUFACTURER'S WARRANTY MAY BE VOIDED BY USE OF THE PRODUCTS IN CONNECTION WITH SUCH ACTIVITIES, UNDER SUCH EXTREME CONDITIONS AND/OR SUBJECT TO SUCH MODIFICATIONS REQUESTED BY BUYER. BUYER ACKNOWLEDGES THAT THE INSTALLATION OF ANY S DIESEL PRODUCTS THAT ARE NOT LEGAL FOR USE ON POLLUTION CONTROLLED MOTOR VEHICLES IS DONE SOLELY AT THE REQUEST OF BUYER AND ALL RESPONSIBILITY FOR ANY EFFECTS ON THE ORIGINAL VEHICLE MANUFACTURERS WARRANTY, ABILITY TO PASS ANY EMISSIONS INSPECTIONS OR FOR ANY FINES THAT MAY OCCUR DUE TO THE REMOVAL OF FEDERALLY MANDATED EMISSION CONTROL EQUIPMENT IS ON BUYER.** No employee or representative of S Diesel has the authority to make any representation, promise or agreement which in any way varies from the terms and conditions of this Warranty. No suit or claim based on any cause of action, regardless of form, arising out of or relating to this Warranty or any of the S Diesel Products supplied by S DIESEL may be brought by Buyer or anyone claiming by, through or under Buyer against S DIESEL more than one year after the date that such cause of action arose.

**IN THE EVENT BUYER DOES NOT AGREE WITH THE TERMS AND CONDITIONS OF THIS WARRANTY, BUYER MAY PROMPTLY RETURN THE PRODUCT TO S DIESEL FOR A FULL REFUND. THE PRODUCT MUST BE IN NEW, UNUSED AND RESELLABLE CONDITION, BE RECEIVED WITHIN FIFTEEN (15) DAYS OF THE ORIGINAL PURCHASE AND BE ACCOMPANIED BY A DATED PROOF OF PURCHASE (RECEIPT). PRODUCTS RETURNED IN NEW, UNUSED AND RESELLABLE CONDITION WILL NOT BE SUBJECT TO ANY RESTOCKING FEES.**

**THE INSTALLATION OR USE OF ANY PRODUCT PURCHASED FROM S DIESEL INDICATES THAT BUYER HAS READ, UNDERSTANDS AND AGREES TO THE TERMS AND CONDITIONS OF THIS WARRANTY.**

### SERVICE WARRANTY POLICY

Subject to the limitations, exclusions, and qualifications set forth below, the service or services performed by S DIESEL (the "S Diesel Service" or "S Diesel Services") are warranted to Buyer as set forth in this Warranty. Buyer's initials below indicate that Buyer has read, understands and agrees to the terms and conditions of this Warranty.

#### LIMITED WARRANTY

The S Diesel Services (except S Diesel Services specified to have different warranty terms) are warranted to have been performed in a workmanlike manner and to hold up under normal use and service for a period (the "Service Warranty Period") of twelve months from date the S Diesel Services are performed. S DIESEL's liability under this Warranty is limited to replication, subject to the provisions set forth herein, of any S Diesel Services which upon examination S DIESEL are found to have not been performed in a workmanlike manner.

S DIESEL shall not have any responsibility under this Warranty unless (1) the defect in an S Diesel Service results in a claim arising within the Service Warranty Period, measured from the date the S Diesel Service is performed, (2) the vehicle upon which the S Diesel Service was performed was normally maintained and not subject to misuse, negligence or accident, and (3) the vehicle upon which the S Diesel Service was performed was not repaired or altered in such a way that in the judgment of S DIESEL the S Diesel Service's durability was adversely affected.

#### EXCLUSIONS

Any of the above warranties by S DIESEL shall not apply if Buyer's vehicle is in an accident, misused, neglected, or serviced in connection with a warranty claim hereunder without prior written approval of S DIESEL.

#### REMEDIES EXCLUSIVE

Replication of unsatisfactory S Diesel Services in accordance with the Limited Warranty above shall be Buyer's exclusive remedy for and shall constitute satisfaction of any and all liabilities of S DIESEL with respect to any defect in any S Diesel Service whether based in warranty, contract, tort, negligence, strict liability or otherwise.

### GENERAL PROVISIONS APPLICABLE TO BOTH PRODUCT AND SERVICE WARRANTIES

#### ASSIGNABILITY OF WARRANTY

This Warranty is for the exclusive benefit of Buyer and is not assignable.

#### WARRANTY CLAIMS PROCEDURE

Warranty claim forms can be printed from the company websites (<http://www.drivendiesel.com> (Products) and <http://www.strictlydiesel.com> (Services)). A properly completed warranty claim form and a copy of the invoice for any defective Product or Service must be received by the Seller within the earlier of 30 days after the expiration of the Warranty Period or the incident giving rise to the claim. To qualify for an adjustment under this Warranty a defective Product must be returned prepaid to the Seller for inspection and must be accompanied by a dated proof of purchase receipt. In addition, the serial number of the defective Product, if any, must match the serial number on Buyer's invoice. All Warranty claims are subject to approval by the Seller and/or the Product's manufacturer. Buyer must pay all applicable service charges and taxes. Defective Products accepted for warranty compensation become the property of the Seller. To qualify for an adjustment under this Warranty a vehicle upon which S Diesel Services have been performed must be delivered to the Seller during Seller's hours of operation for inspection and must be accompanied by a dated proof of purchase receipt.

#### WAIVER

Any failure of the part of S Diesel to insist on strict compliance with the Warranty Provisions shall no way constitute a waiver of such right. No claim or rights arising out of a breach of the Warranty Provisions by Buyer may be discharged in whole or in part by a waiver of the claim or right, unless the waiver is in writing signed by an authorized representative of S Diesel. S Diesel's waiver or acceptance of any breach by Buyer of any provisions of the Warranty Provisions shall not constitute a waiver of or an excuse for nonperformance as to any other provision of the Warranty Provisions nor as to any prior or subsequent breach of the same provision.

#### APPLICABLE LAW

The Warranty shall be governed by the laws of the State of Arizona (excluding Arizona law with respect to conflicts of law).

\* Driven Diesel was formerly known as ITP Diesel, LLC and Sinister Diesel, LLC.